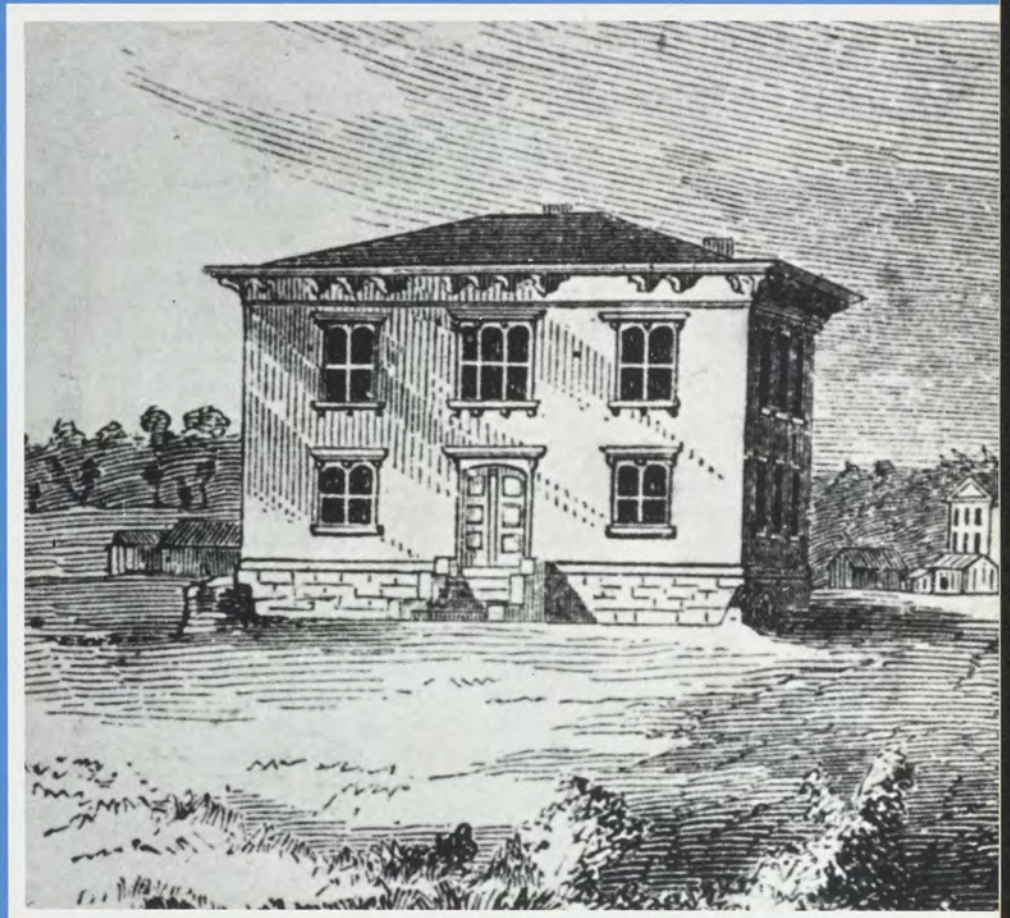




RAMSEY COUNTY HISTORY



Spring

1974

Volume 11

Number 1

Ramsey County History

Published by the
RAMSEY COUNTY and SAINT PAUL HISTORICAL SOCIETY

Editor: Virginia Brainard Kunz

Contents

Spring	Macalester and Its First Forty Years By Edward Swanson	Page 3
1974	Minnesota's Wandering State Fair And How It Settled in St. Paul By Gordon Hayes	Page 12
Volume 11	Explorers, Traders, Farmers — The Early History of St. Paul By Anne Cowie	Page 18
Number 1		

RAMSEY COUNTY HISTORY is published semi-annually and copyrighted 1974 by the Ramsey County and Saint Paul Historical Society, 75 West Fifth Street, St. Paul, Minnesota. Membership in the Society carries with it a subscription to *Ramsey County History*. Single issues sell for \$1.50. Correspondence concerning contributions should be addressed to the editor. The Society assumes no responsibility for statements made by contributors. Manuscripts and other editorial material are welcomed but no payment can be made for contributions. All articles and other editorial material submitted will be carefully read and published, if accepted, as space permits.

ON THE COVER: The Baldwin School, founded by the Rev. Edward D. Neill, after he secured a charter for the school from the 1853 Territorial Legislature. It was named for a Philadelphia locomotive builder, M. W. Baldwin, who helped finance the school. This two-story brick building stood on West Fifth Street, across from Rice Park, the present site of the Old Federal Courts Building. The school building served as a post office from 1857 to 1862.

ACKNOWLEDGEMENTS: All pictures used in this issue are from the audio-visual department of the Minnesota Historical Society, St. Paul.

The Ramsey County and Saint Paul Historical Society

OFFICERS OF THE SOCIETY

Robert Orr Baker
President

Henry H. Cowie, Jr.
First Vice President

Mr. A. James Dickinson
Second Vice President

Mrs. Gale Frost
Recording Secretary

Mrs. Joseph North
Corresponding Secretary

Kit Svee
Treasurer

EXECUTIVE DIRECTOR
Virginia Brainard Kunz

Site Manager: The Gibbs Farm Museum
Robert M. Drake

THE BOARD OF DIRECTORS

Robert Orr Baker
Mrs. Clifford Alexis
Bartlett Baker
George Bohrer
W. Brooks Cavin, Jr.
Henry Cowie, Jr.
Anthony DeZiel
A. James Dickinson
Richard Faricy
Mrs. Stanley J. Fiorito, Jr.
Mrs. Gale Frost
Henry Hall
Mrs. John Henry
William H. Kircher
Robert B. Mirick
Mrs. Joseph North
Stephen A. Osborn
Frank Paskewitz
Charles Simmer
Kit Svee
Richard Vogl

PUBLICATIONS COMMITTEE

Henry Hall, *chairman*
Gerald McKay
Henry Cowie, Jr.
William L. Cavert
Bartlett Baker
Ruth Stryker

THE BOARD OF RAMSEY COUNTY COMMISSIONERS

Lawrence Cohen, *Chairman*
John T. Finley
Mrs. Donald M. DeCourcy
Mrs. Delores Knaak

Anthony Danna
William Carlson, Jr.
Ed Salverda
Harry Marshall, *Executive Secretary*



THE GIBBS HOUSE

at 2097 West Larpenteur Avenue, Falcon Heights, is owned and maintained by the Ramsey County and Saint Paul Historical Society as a restored farm home of the mid-nineteenth century period.

THE Ramsey County Historical Society was founded in 1949. During the following years the Society, believing that a sense of history is of great importance in giving a new, mobile generation a knowledge of its roots in the past, acquired the 100-year-old farm home which had belonged to Heman R. Gibbs. The Society restored the Gibbs House and in 1954 opened it to the public as a museum which would depict the way of life of an early Minnesota settler.

In 1958, the Society erected a barn behind the farm house which is maintained as an agricultural museum to display the tools and other implements used by the men who broke up the prairie soil and farmed with horse and oxen. In 1966, the Society moved to its museum property a one-room rural schoolhouse, dating from the 1870's. The white frame school came from near Milan, Minnesota. Now restored to the period of the late 1890's, the school actually is used for classes and meetings.

Headquarters of the Ramsey County and Saint Paul Historical Society are located in the Old Federal Courts Building in downtown St. Paul, an historic building of neo-Romanesque architecture which the Society, with other groups, fought to save from demolition. The Society also maintains a museum office in the basement of the schoolhouse on the Gibbs Farm property. The Society is active in identification of historic sites in the city and county, and conducts an educational program which includes the teaching and demonstration of old arts and crafts. It is one of the few county historical societies in the country to engage in an extensive publishing program in local history.