

MINNEHAHA MEDIA

St. Paul Trails Map **FREE**

Special East Side Edition

- Bike Mileages
- Bruce Vento Nature Sanctuary
- Swede Hollow Park
- Eastside Heritage Park
- Parks, Schools and Points of Interest

Lower Phalen Creek Project

Seriously Great Maps!

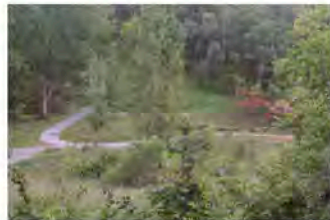


Take a hike or ride your bike on Saint Paul's East Side

The Bruce Vento Regional Trail travels through a string of beautiful city parks on Saint Paul's East Side. The trail also connects many useful destinations — from the YMCA on Arcade Street, to the Library on East Seventh to the Saint Paul Farmers Market in Lowertown. Next time you have someplace to go, or need a little exercise, get out on the trail. You'll be glad you did!

Map Key

- Bike Trail
- Other Trail
- Bike Lane



1 Eastside Heritage Park

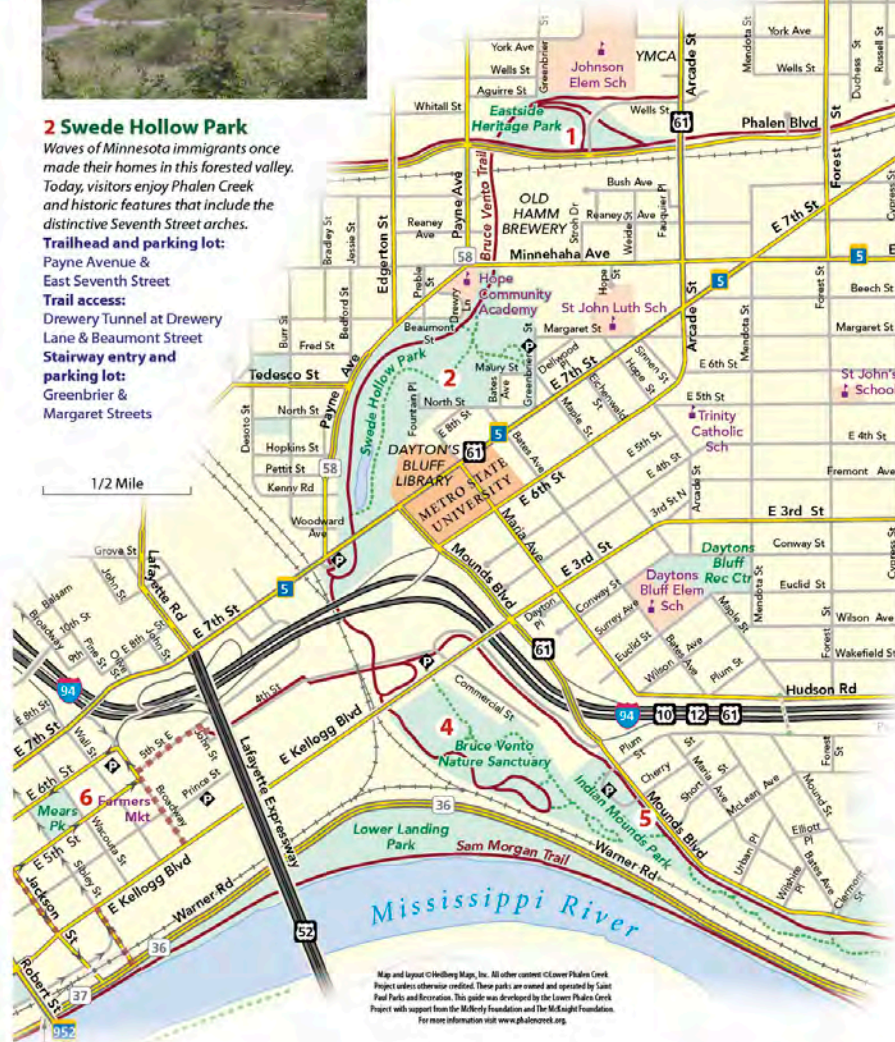
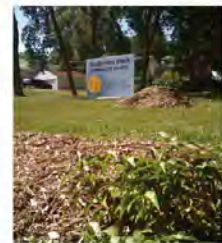
Gather with family and friends, take a stroll and learn about local history in this appealing new park. Trailhead with parking lot, bathrooms, picnic pavilion and interpretive kiosks: Phalen Blvd between Payne Avenue & Arcade Street

2 Swede Hollow Park

Waves of Minnesota immigrants once made their homes in this forested valley. Today, visitors enjoy Phalen Creek and historic features that include the distinctive Seventh Street arches. Trailhead and parking lot: Payne Avenue & East Seventh Street
Trail access: Drewery Tunnel at Drewery Lane & Beaumont Street
Stairway entry and parking lot: Greenbrier & Margaret Streets

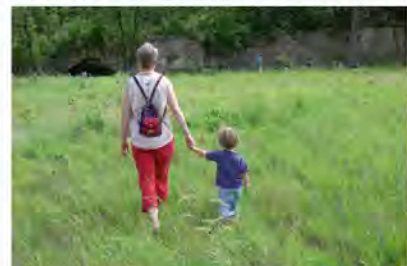
3 Skidmore Park

In the late 1800s, a developer donated five city lots on this block for parkland. Today the Dayton's Bluff Greenspace Committee is developing community gardens here. 1129 East Fourth Street



4 Bruce Vento Nature Sanctuary

Nestled below towering bluffs on the Mississippi River floodplain, the sanctuary includes three spring-fed wetlands, abundant bird habitat, a cave sacred to the Dakota and remnants of the rail lines and brewery that once existed here. Parking lot and entrance: Corner of Commercial & East Fourth Streets.



6 Mears Park

This charming, nature filled square in the heart of Lowertown is known for its outdoor concerts, holiday lights and lively ambience. One square block bordered by East Fifth, East Sixth, Sibley & Wacouta Streets



photo: Chris Faust



5 Indian Mounds Park

Perched along the top of the Mississippi River bluffs, this park offers stunning views and nearly three miles of trails. Six burial mounds bear testimony to the land's use as a graveyard and ceremonial area by the Hopewell and, more recently, the Dakota. Overlook parking lot: Mounds Blvd between Plum & Cherry Streets
Picnic pavilion and playground: Mounds Blvd & Earl Street

Map and layout ©Hollberg Maps, Inc. All other content ©Lower Phalen Creek Project unless otherwise credited. These parks are owned and operated by Saint Paul Parks and Recreation. This guide was developed by the Lower Phalen Creek Project with support from the McHenry Foundation and The M.E. Knight Foundation. For more information visit www.phalencreek.org